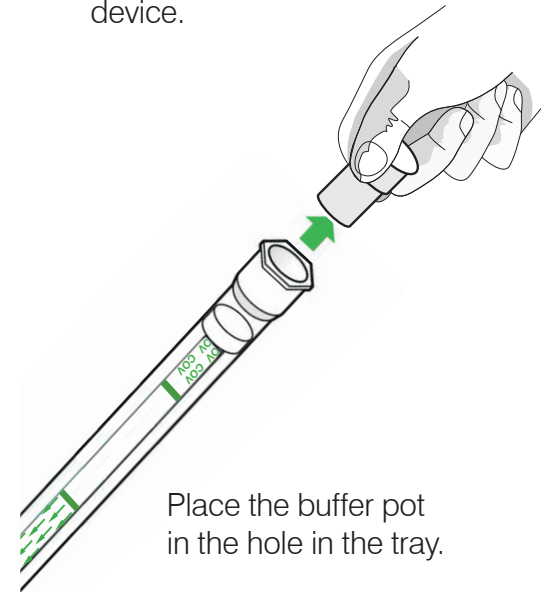
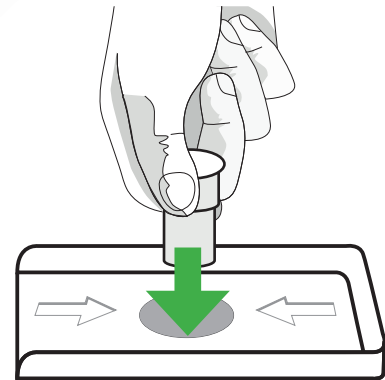


1. Prepare

Find and remove the buffer pot from the end of the test device.

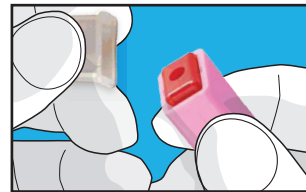


Place the buffer pot in the hole in the tray.

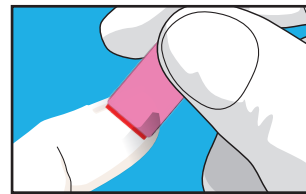


2. Sample

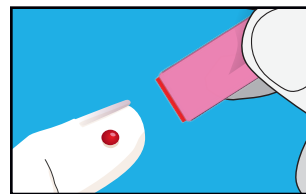
Remove cover.



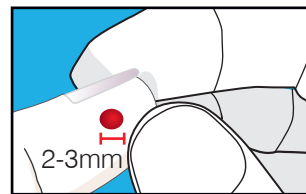
Place the red pad of lancet on side of finger.



Push the lancet down until it "clicks".

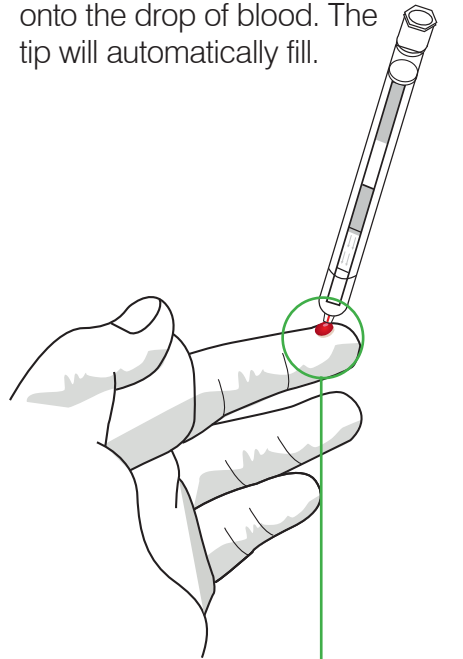


You can squeeze to make the drop bigger.



3. Collect

Touch the tip of your test onto the drop of blood. The tip will automatically fill.

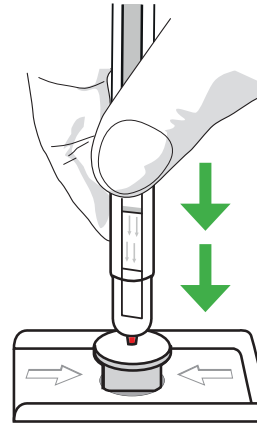


This is all you need...

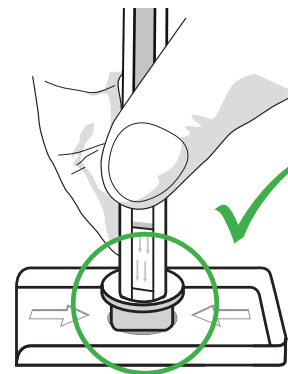


4. Test

Push the tip of your test through the foil lid into the buffer pot: **PUSH DOWN HARD.**



You **must** make sure that you **push completely down to the bottom of the buffer pot.**



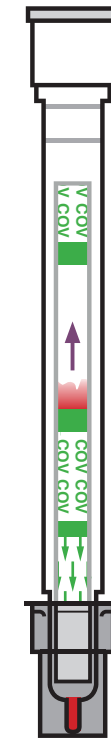
Now wait...



Start your timer.
You need to time **20 minutes.**



After about **1 minute**, **CHECK** to make sure your test is running.



If your test is running, you should see colour moving up the test strip.

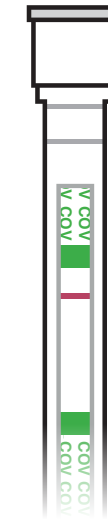
If not, push the test down to the bottom of the buffer pot.

5. Result

Lay your test in the tray and compare your test to the images below. 2 lines can appear on your test: the control line (top line) and the test line (bottom line). The lines can only appear in the positions shown.

My test has...

1 LINE



My test result is **NEGATIVE**

2 LINES



OR

My test result is **POSITIVE**

NO CONTROL LINE



My test did **NOT** work.
You need to test again.

OPEN
HERE

LAY YOUR TEST HERE.

5. Results










Wait 20 minutes for your test to run...

Then turn this page and read your test result.



31012CST EN REV.B.1 

HELPFUL TIPS

-  Wash your hands and ensure that they are clean and dry before starting.
-  It is recommended that you perform your test in a well lit area.
-  If you normally wear spectacles to read, you should wear them while performing your test and reading your result.
-  The lines on your test can only appear in the positions shown, but the line strength and shade can vary. Even if the line is very faint, it should still be read as a line. (See 5. Results)
-  Do not read your result more than 1 hour after performing your test.
-  The test and the lancet will only work once
-  If you have any other questions please refer to the product insert supplied with your test.



You may see a faint **red mark** appear here.

THIS IS FROM YOUR BLOOD SAMPLE, IT IS NOT A LINE.

Disposal

To dispose of your BioSURE COVID-19 IgG Antibody Self Test, place all components back into the box. Discard with your normal household rubbish.

Not yet suitable for recycling.

For more information:
Visit www.biosuretest.com



Manufactured by
BioSure (UK) Ltd. Nazeing,
Essex EN9 2HB
United Kingdom
+44 (0)1992 815 825
www.biosuretest.com
info@biosure.co.uk

EC	REP
Authorised Representative in the EU TNMC Devices Limited (LLC) Krežmina 1 10000 Zagreb Croatia	

Copyright © 2021 BioSure (UK) Limited. All rights reserved.

 COVID-19 IgG Antibody Self Test

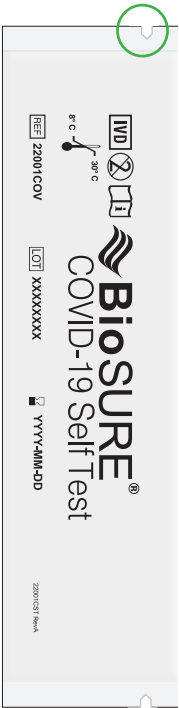
Before you start

Read these instructions.
You can watch our short video here.



When you are ready

Make sure your hands are clean and dry. Open the pouch by tearing here



Your pouch contains:

